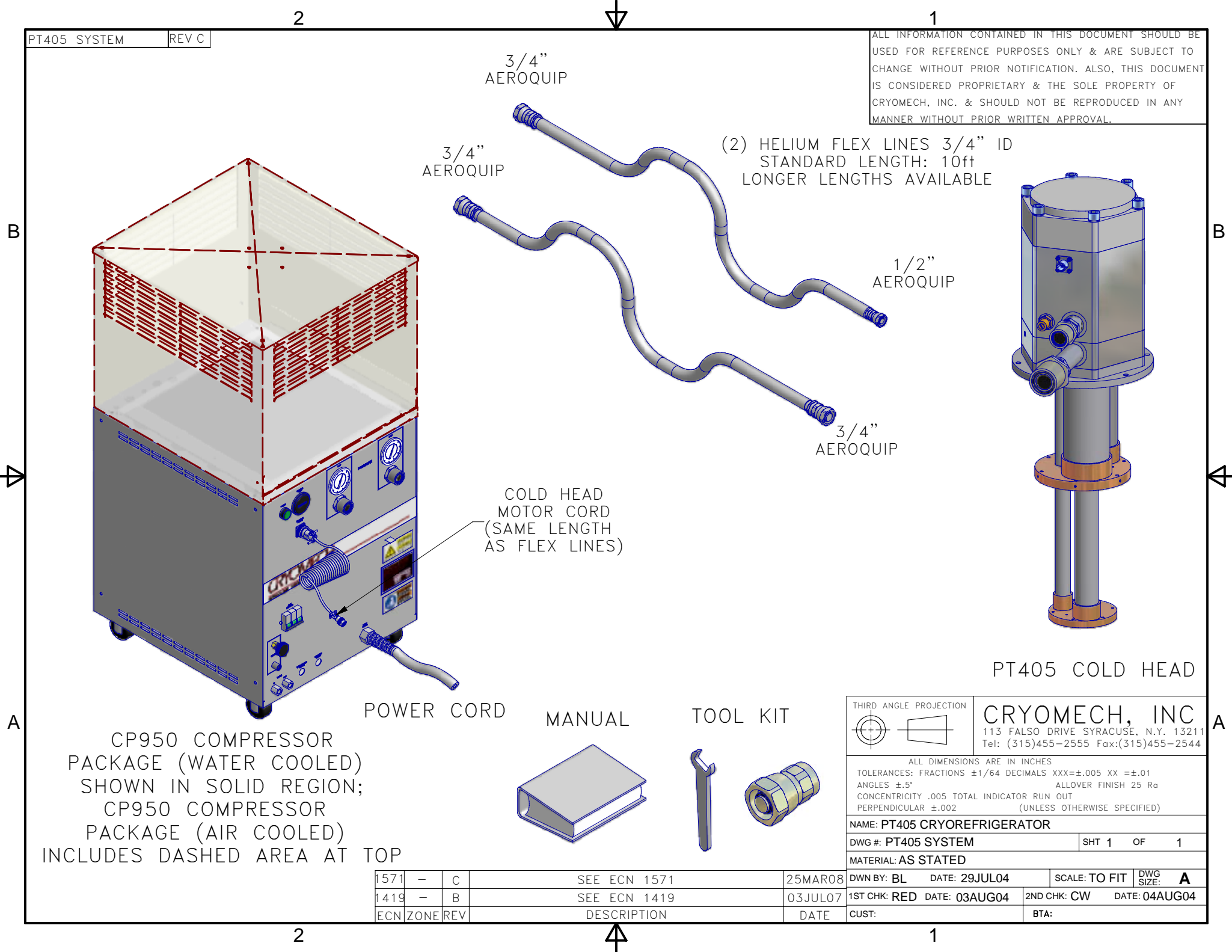


ALL INFORMATION CONTAINED IN THIS DOCUMENT SHOULD BE USED FOR REFERENCE PURPOSES ONLY & ARE SUBJECT TO CHANGE WITHOUT PRIOR NOTIFICATION. ALSO, THIS DOCUMENT IS CONSIDERED PROPRIETARY & THE SOLE PROPERTY OF CRYOMECH, INC. & SHOULD NOT BE REPRODUCED IN ANY MANNER WITHOUT PRIOR WRITTEN APPROVAL.



3/4" AEROQUIP

3/4" AEROQUIP

(2) HELIUM FLEX LINES 3/4" ID
STANDARD LENGTH: 10ft
LONGER LENGTHS AVAILABLE

1/2" AEROQUIP

3/4" AEROQUIP

COLD HEAD
MOTOR CORD
(SAME LENGTH
AS FLEX LINES)

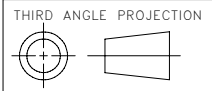
PT405 COLD HEAD

POWER CORD

MANUAL

TOOL KIT

CP950 COMPRESSOR PACKAGE (WATER COOLED) SHOWN IN SOLID REGION; CP950 COMPRESSOR PACKAGE (AIR COOLED) INCLUDES DASHED AREA AT TOP



CRYOMECH, INC
113 FALSO DRIVE SYRACUSE, N.Y. 13211
Tel: (315)455-2555 Fax:(315)455-2544

ALL DIMENSIONS ARE IN INCHES
TOLERANCES: FRACTIONS ±1/64 DECIMALS XXX=±.005 XX =±.01
ANGLES ±.5° ALLOVER FINISH 25 Ra
CONCENTRICITY .005 TOTAL INDICATOR RUN OUT
PERPENDICULAR ±.002 (UNLESS OTHERWISE SPECIFIED)

| | | | |
|------------------------------|---------------|---------------|--------------------|
| NAME: PT405 CRYOREFRIGERATOR | | | |
| DWG #: PT405 SYSTEM | | SHT 1 OF 1 | |
| MATERIAL: AS STATED | | | |
| DWN BY: BL | DATE: 29JUL04 | SCALE: TO FIT | DWG SIZE: A |
| 1ST CHK: RED | DATE: 03AUG04 | 2ND CHK: CW | DATE: 04AUG04 |
| CUST: | | BTA: | |

| ECN | ZONE | REV | DESCRIPTION | DATE |
|------|------|-----|--------------|---------|
| 1571 | - | C | SEE ECN 1571 | 25MAR08 |
| 1419 | - | B | SEE ECN 1419 | 03JUL07 |